



Attractive  
Tasty  
Healthy

Robust  
Sustainable



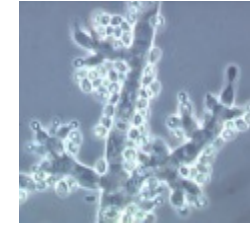
## OUR MISSION – HELP GROWERS COPE WITH CHALLENGES



Koppert Biological Systems contributes to better health of people and the planet.

In partnership with nature, we make agriculture healthier, safer and more productive.

We provide an integrated system of specialist knowledge and **natural, safe solutions** that improves crop health, resilience and production



# Partners with Nature



FROM ABIOTIC STRESS, SUCH AS ...



**Heat/Cold**

**Dry/wet/flooding**

**Salinity**

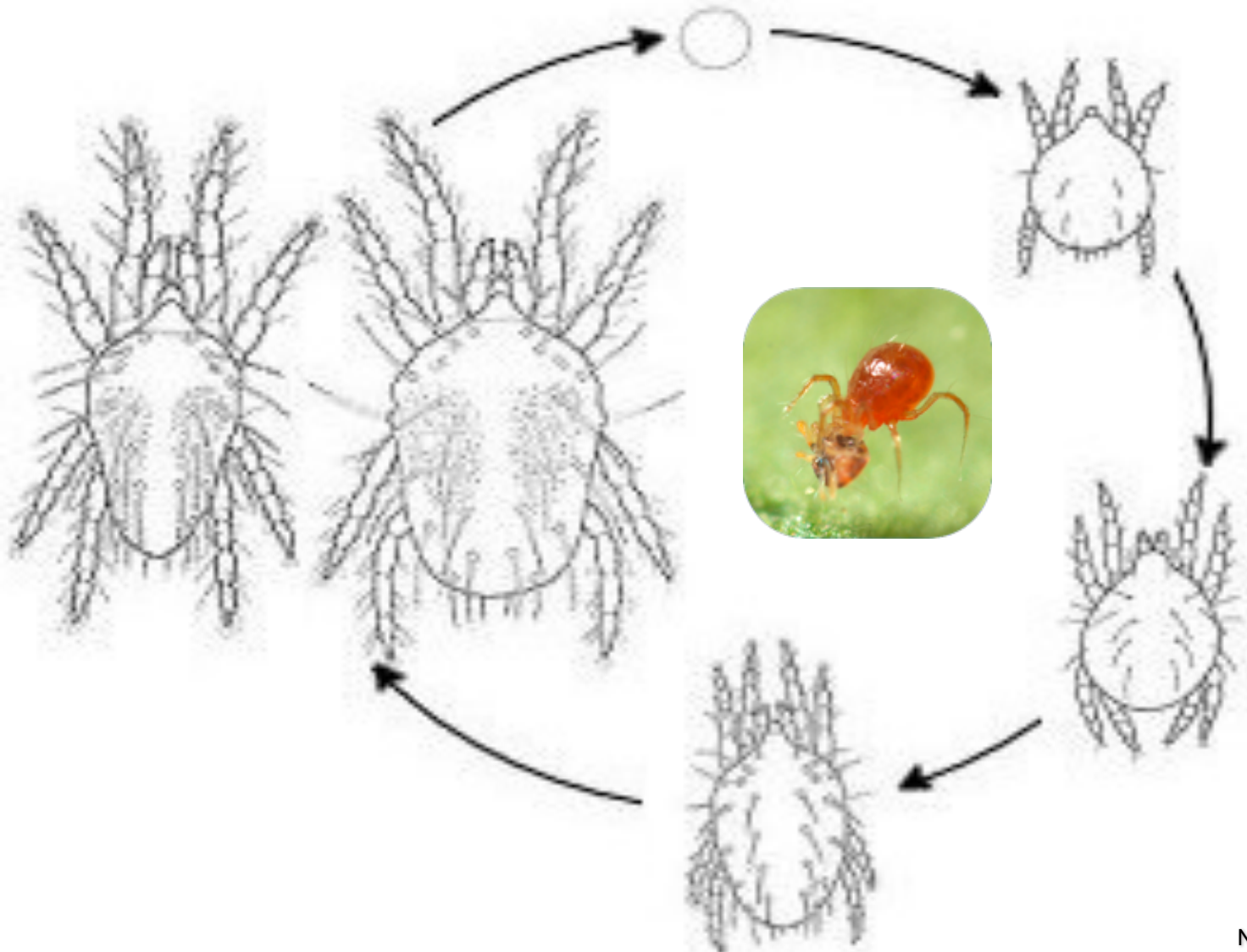
**Soil mineral unbalances**

**Contaminations**

**Oxidative agents**



...TO BIOTIC STRESSORS LIKE SPIDER MITES,



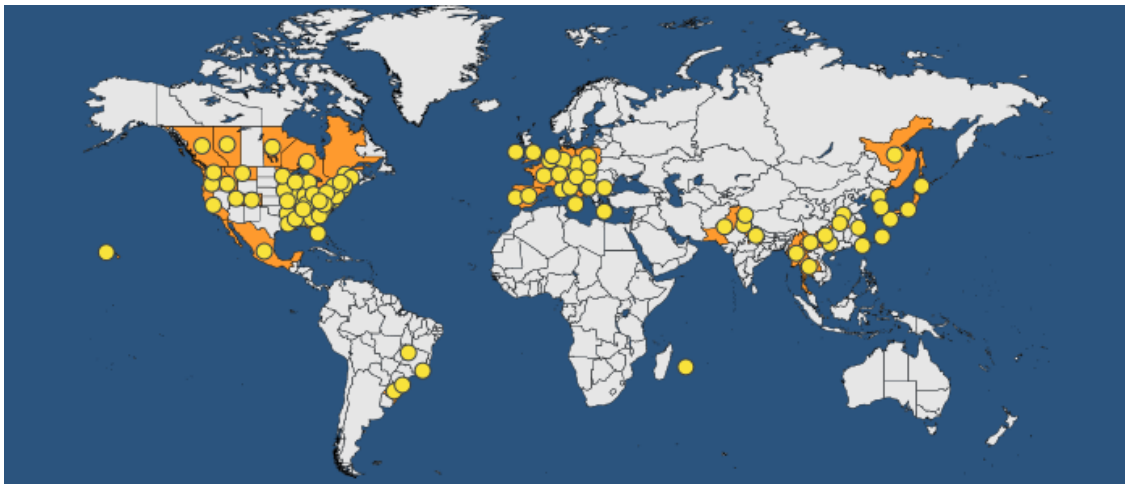
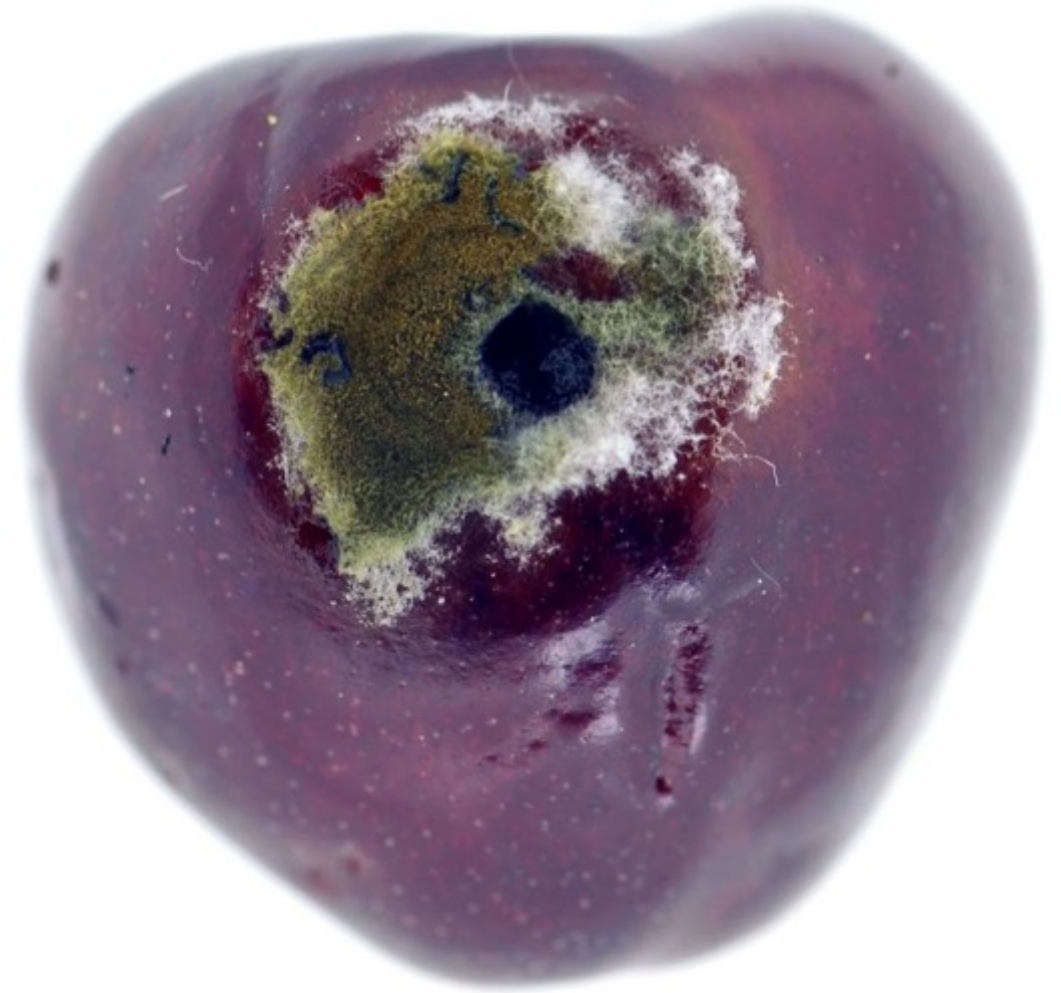


# PHYTOPHTORA CACTORUM IN STRAWBERRY,



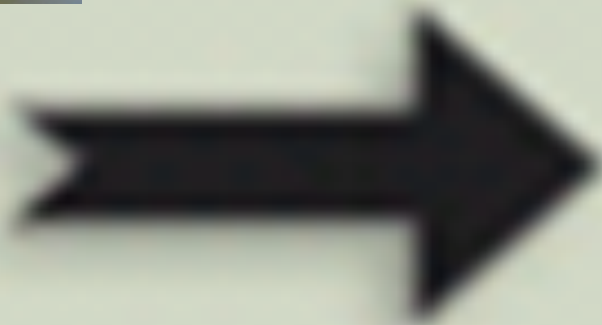


# AND BIOTIC STRESSORS: DROSOPHILA SUZUKI IN BLUEBERRY



*Drosophila suzukii* (DROSSU) - <https://gd.eppo.int>

...WITH AN INTELLIGENT COMBINATION OF (NATURAL) RESOURCES



Side effects	CONFIDOR imidacloprid		DECS deltamethrin		PABAAT dimethomorph			VERTEC abamectin
	SP	DR	SP	TMX	SP	DR	TMX	SP
<b>Bombus terrestris</b> NATURPE Bumble		X	X	⊕	⊕			⊕
	30 d	30 d	2 d		1 d			2 d
<b>Phytoseiulus persimilis</b> SPECIE		⊕						⊕
	population							
	adult		⊕		⊕			⊕
	nymp		⊕		⊕			⊕
	egg		⊕					
	3 - 5 w	2 w	8 - 12 w		0 w			1 - 2 w
<b>Trichoderma harzianum</b> T-22 TRIANAL P		⊕			⊕			⊕
	mycelium							
	spore	⊕			⊕			⊕
	0 w	0 w			0 w			0 w



Notes pages contain additional information. Pictures/thumbnails lead to related webpages.

**Workers exposure**  
**Biodiversity decline**  
**(Ground)water contamination**  
**Beneficial organisms killed**  
**Effect (combined) residues on consumers' health**



## **TRADITIONAL PRACTICE**

**RE-active**

**Control**

**Kill the enemy**

**Technology leading**

**Grower feeds plant**

## **SYSTEM APPROACH**

**PRO-active**

**Facilitate**

**Foster diversity**

**Partner with Nature**

**Grower feeds soil, soil  
feeds plant**





...follows developing soft fruit growing area's

At present, active in Integrated Berry Production in:

- North-West Europe
- Mediterranean countries
- North Africa
- Mexico KDI, USA, Canada, Chili

Each area different emphasis on pollination, pest & disease control and/or resilient growing



# Partners with Nature

MANY THANKS FOR YOUR ATTENTION



[emoerman@koppert.nl](mailto:emoerman@koppert.nl)

Koppert Biological Systems